



NATIONAL
RURAL HEALTH
RESOURCE CENTER

Allen Parish Community Healthcare Hospital Community Connect Event

October 26, 2022

The Center's Purpose

The [National Rural Health Resource Center \(The Center\)](#) is a nonprofit organization dedicated to sustaining and improving health care in rural communities. As the nation's leading technical assistance and knowledge center in rural health, The Center focuses on five core areas:

- Transition to value and Population Health
- Collaboration and Partnership
- Performance Improvement
- Health Information technology
- Workforce



Diversity, Equity, Inclusion, & Anti-racism



Building a culture where difference is valued.

The Center is committed to DEI and anti-racism. We create an environment that reflects the communities we live in and serve; a place where everyone feels accepted and empowered to be their full, authentic selves; and where everyone belongs.

We understand the impact of and seek to defeat racism and discrimination in ourselves, our workplace, and the world. This guides how we cultivate leaders, build our programs and resources, and deliver our technical assistance.

We are an organization that honors, celebrates, and respects all dimensions of diversity. These principles are central to our mission and to our impact.

[Read more at ruralcenter.org/DEI](https://ruralcenter.org/DEI)



NATIONAL
RURAL HEALTH
RESOURCE CENTER

Delta Region Community Health System Development (DRCHSD) Program Supported By:



U.S. Department of Health & Human Services



HRSA

Federal Office of Rural Health Policy

This project is supported by the Health Resources and Services Administration (HRSA) of the U.S. Department of Health and Human Services (HHS) as part of a financial assistance award totaling \$10,000,000 with 100% funded by HRSA/HHS and \$0 amount and 0% funded by non-government sources. The contents are those of the author(s) and do not necessarily represent the official views of, nor an endorsement by HRSA/HHS, or the U.S. Government.



NATIONAL
RURAL HEALTH
RESOURCE CENTER

Introductions

- Center Staff
- Facility Staff
- Participants

- What is your favorite fall activity?



DRCHSD Community Care Coordination Approach



Today's BIG Question

How can **Allen Parish Community Healthcare Hospital** connect with the community, build trust and address concerns?

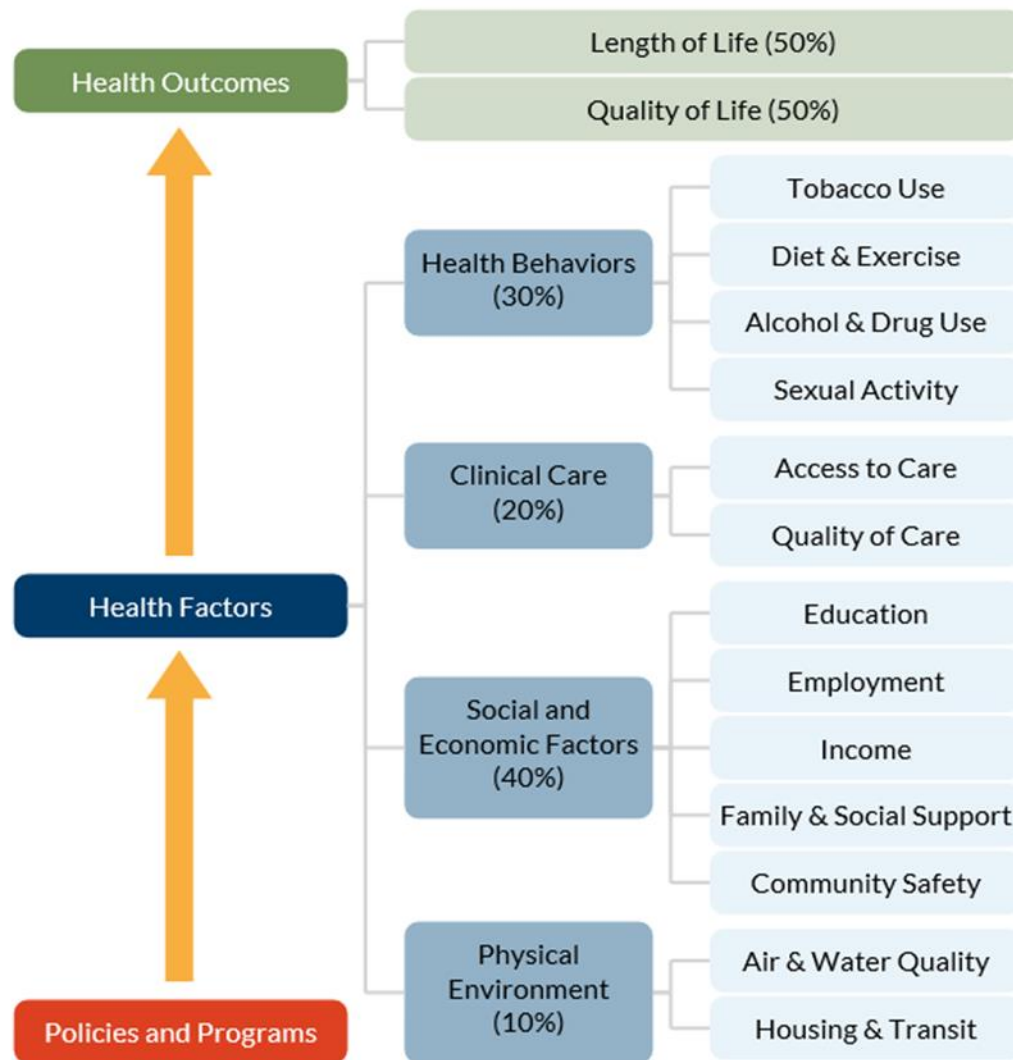


Event Agenda

- Setting the Stage
- Community Conversation – Large and Small Groups
- Small Group Report Out
- Closing



Health Care Accounts for 20% of Your Health



County Health Rankings model © 2014 UWPHI

County Health Rankings & Roadmaps. (2014). County Health Rankings Model. Retrieved 31 January 2020, from <https://www.countyhealthrankings.org/explore-health-rankings/measures-data-sources/county-health-rankings-model>



NATIONAL
RURAL HEALTH
RESOURCE CENTER

Population Health Planning and Community Care Coordination



A better *you* begins with us.



NEW BUILDING COMING SOON!

📍 108 Sixth Avenue | Kinder, LA 70648

🌐 AllenHealth.net

Rural Health Clinic (337) 738-9494

Same day appointments, walk-ins welcome,
accepting Medicare, Medicaid & most
commercial insurance

SERVICES:

- Primary care
- OB/GYN **NEW!**
- Licensed counselor, LPC
- Outpatient behavioral health **NEW!**
- Specialty clinic - cardiology
- Brown Hearing Center FREE screenings



Allen Parish
Community Healthcare



Allen Parish
Community Healthcare

Community Connect

OCTOBER 26, 2022 | 9 – 11AM

This project is supported by the Health Resources and Services Administration (HRSA) of the U.S. Department of Health and Human Services (HHS) as part of a financial assistance award totaling \$10,000,000 with 100% funded by HRSA/HHS and \$0 amount and 0% funded by non-government sources. The contents are those of the author(s) and do not necessarily represent the official views of, nor an endorsement by HRSA/HHS, or the U.S. Government.



Current Services



Pharmacy Inpatient Imaging Diagnostic Occupational
Specialty Emergency Hospice Nursing Unit
Clinic Rural MenSurg
Behavioral Therapy Health Physical
Lab Cardiopulmonary Vision New
Care time Skilled

Emerging Services

New Rural Health Clinic/New Hospital

- ▶ Mammogram
- ▶ Ob/Gyn
- ▶ Telehealth
- ▶ Aesthetic Services
- ▶ Elderly Assistance
in appointment
reminders



Community Collaboration



 **Learn the skills.**
Help save a life.

- ▶ **Suicide Assist Training was sponsored by APH and Coshatta Casino Resort.**
- ▶ **Funding came from a grant from Christus healthcare given to Assist Workshops.**

Community Collaboration

- ▶ **Celebrating Back to School**
- ▶ **APH and the Kinder Nursing Home provided healthy snacks to elementary and middle school students**



Community Collaboration

► Recognizing our Phlebotomy graduates



Community Collaboration



- ▶ **APH and Kinder Nursing home hosted an ice cream party for the patients at the nursing home.**
- ▶ **More Elderly Events – Food distribution, vaccines, flu shots, blood pressure checks, and more to come**



Community Collaboration

GOLF TOURNAMENTS & THE OBERLIN COLOR WALK APH SPONSORED

- ▶ SWLA Chamber
- ▶ Kinder High School Football
- ▶ Give a Wish
- ▶ Chairman's Cup & much more



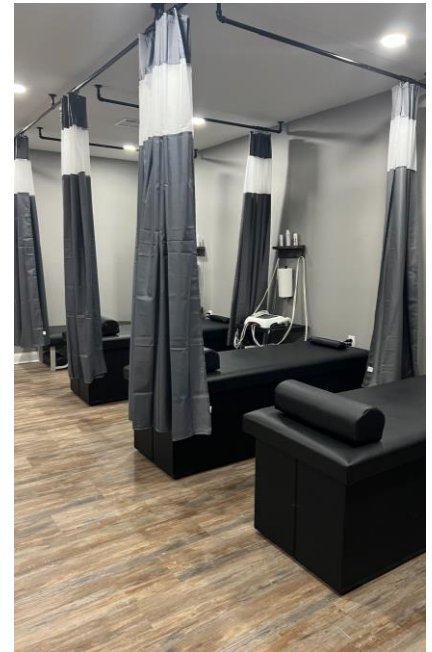
Community Collaboration

► Kinder Alumni Incredi-Ball Tournament Sponsor



Community Collaboration

- ▶ Mr. Edrick requests different music
- ▶ Dr. Storer dedication
- ▶ Mad Hot Involvement
- ▶ New location for Kinder chiropractor



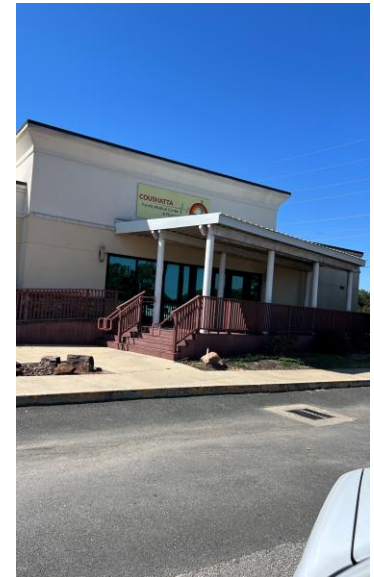
Walking/Windshield Tour



- ▶ New Mexican restaurant coming
- ▶ Veteran's Park refurbished
- ▶ Lambert Park renovated
- ▶ Allen Parish Tourist Center
- ▶ Slim's demolition – what comes next?

Walking/Windshield Tour

- ▶ **Coushatta Casino Resort offering livestock sales, gaming, and also a medical clinic for employees**



Walking/Windshield Tour

- ▶ **Woodland Rigid RV Park** offering covered pavilion, private sandbar, fishing, walking trails, and a private boat launch



Walking/Windshield Tour

New Businesses & new locations

- ▶ Southern Roots – Opened in 2021
- ▶ Van Norman's – Relocated to what was formerly Capital One building in 2022
- ▶ The Hive Nutrition – Relocated to larger building in Fall 2022
- ▶ Kinder Glass has new owner and offering more services Fall 2022



Walking/Windshield Tour

- ▶ The Mayor's initiative, cleaning ditches, and improving drainage



- ▶ New road signs



Small Group Conversation



- Facilitator will lead discussion and record responses
- Identify a spokesperson to report out to the large group



Closing Discussion

- What stands out to you from today's event?
- What information did you learn today that you can share with others?



What's Next

- Community health questionnaire



What's Next

- Community Priority Action Planning Event



Walking Windshield Tour



Walking and windshield tours are designed to provide an in-depth look into a community's characteristics on foot or from a moving vehicle. The tours may be used to observe the conditions in the environments where people are born, live, learn, work, play, worship, and age, also known as social determinants of health.



Contact Information:

Kimberly Caldarera-Theriot
Community Champion
Kimberly@allenparish.net



Something **BIG** is **Happening**

Don't miss the fun & festivities at the BIG
groundbreaking for our NEW hospital!

OCT 26
2:30 pm

West Side of Campus

Everyone is invited! For more info, visit
allenhealth.org/new-hospital



Allen Parish
Community Healthcare



Allen Parish
Community Healthcare

108 Sixth Avenue Kinder, LA 70648 | (337) 738-2527 | allenhealth.org